

U.S. Coast Guard Deepwater Horizon Incident Response Summary

RADM Mary Landry
Eighth Coast Guard District Commander



Background

Mobile Offshore Drilling Unit (MODU) Deepwater Horizon (DWH)

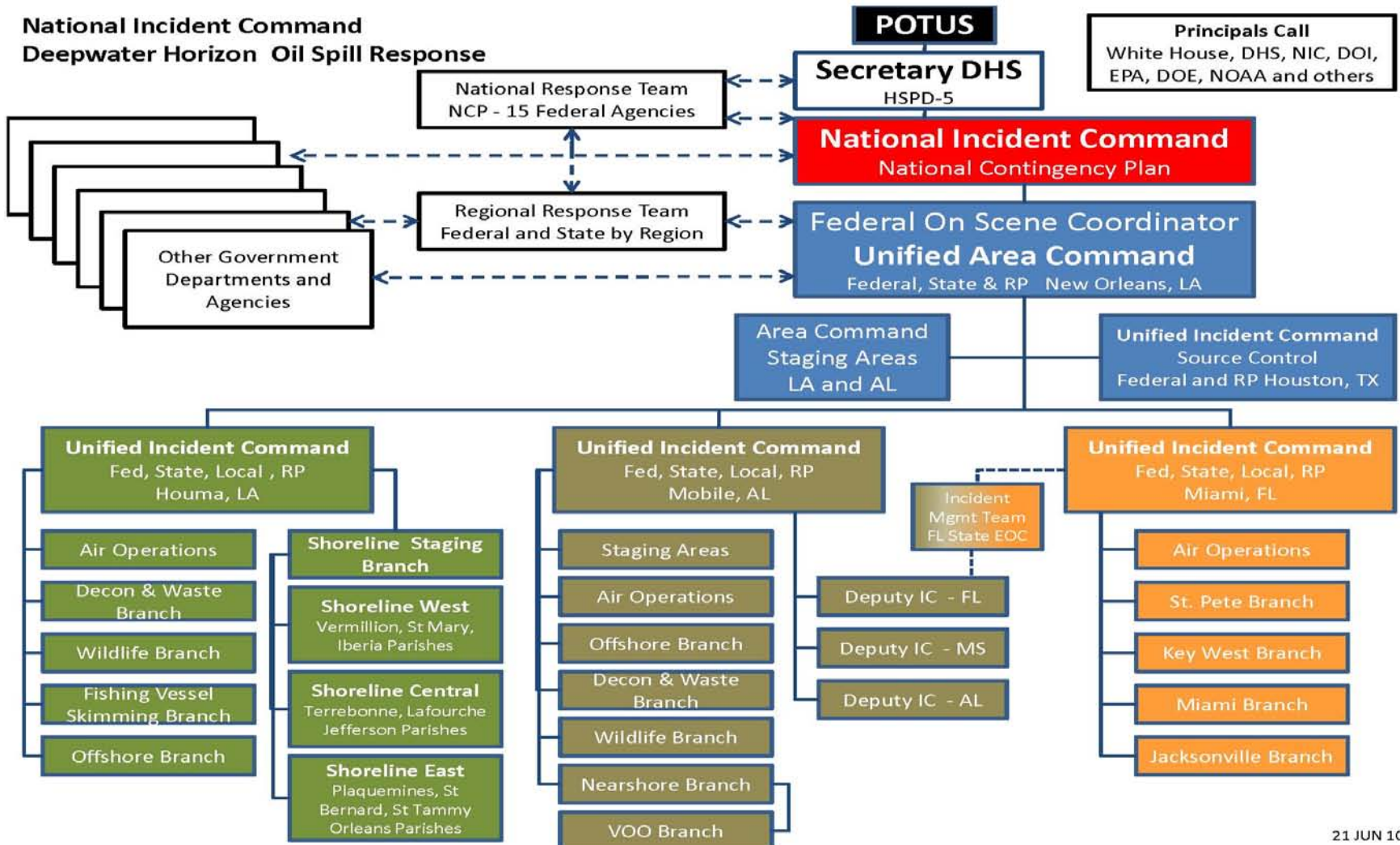
- Dynamically positioned, semi-submersible drilling unit located 45 miles SE of Venice, LA

Day 1 – April 20th

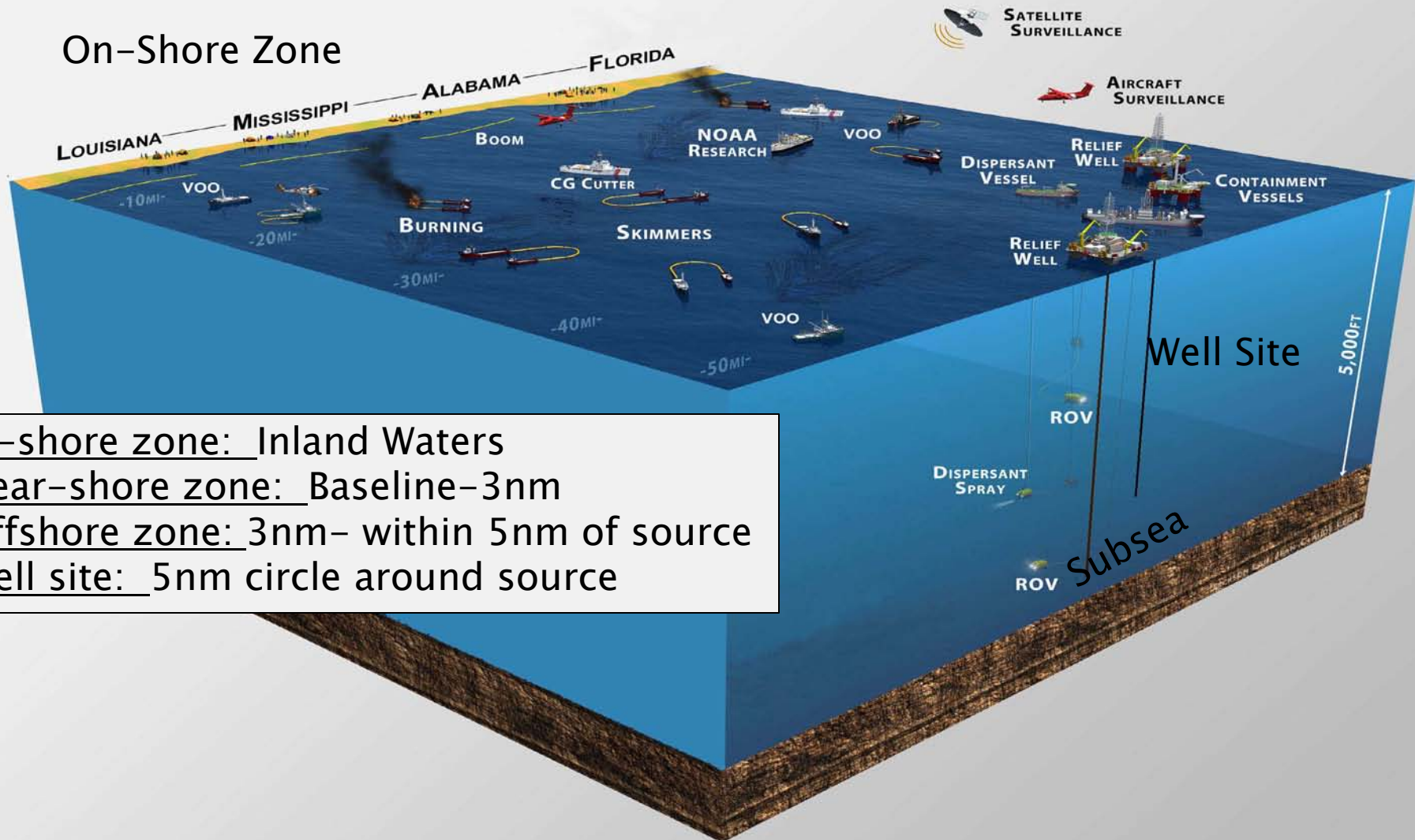
- D8 Command Centers notified of fire/explosion on MODU DWH approx 10:00 pm
- Initiated SAR efforts
- Coordinated firefighting efforts
- Established incident command post



Overall Organizational Chart



Overall Organizational Chart



In-shore zone: Inland Waters

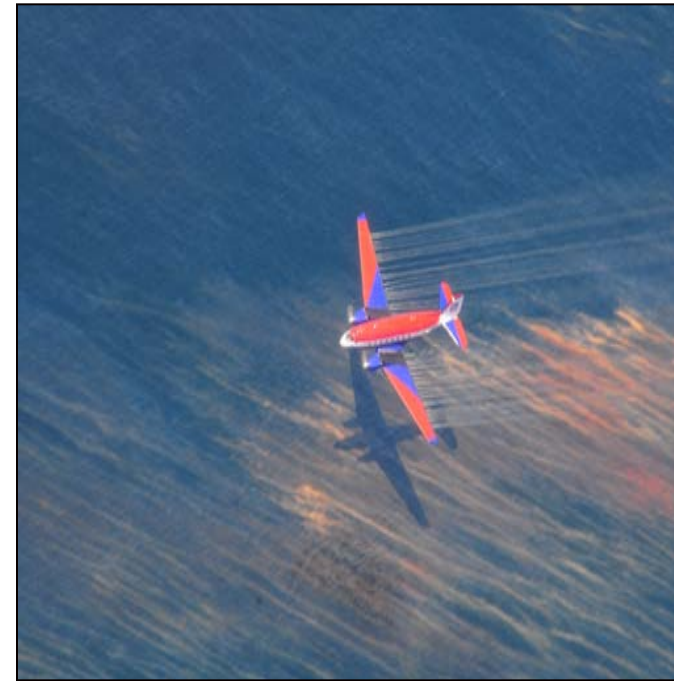
Near-shore zone: Baseline-3nm

Offshore zone: 3nm- within 5nm of source

Well site: 5nm circle around source

Offshore Operations

- ▶ Skimming
- ▶ In-Situ Burning
- ▶ Dispersants
 - Surface
 - Subsurface



Nearshore Operations

- Vessels of Opportunity

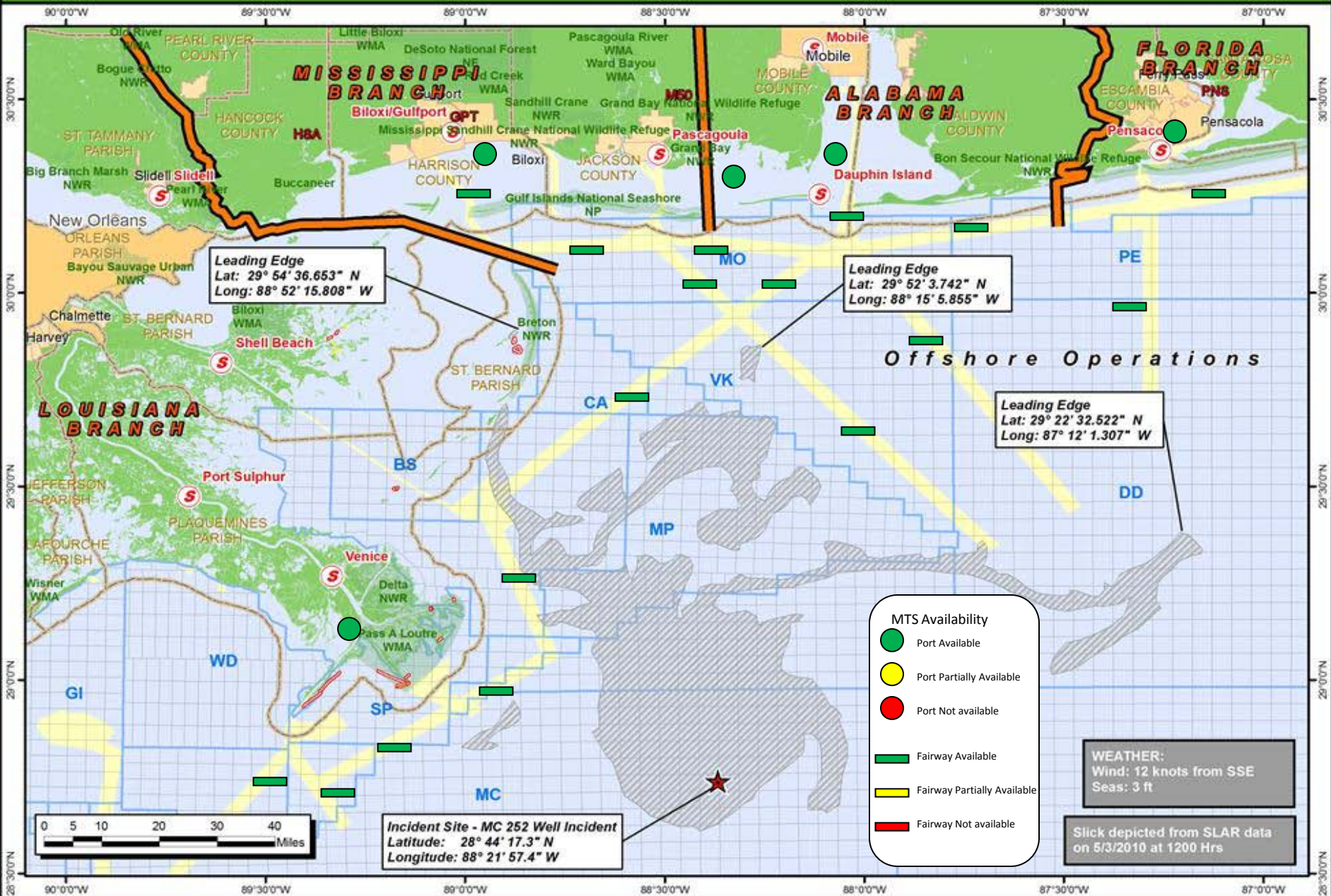


- Skimmers

MISSISSIPPI CANYON 252 SITUATION STATUS MAP

5/3/2010 1700 Hrs

Scale: 1:1,353,909



Leading Edge
Lat: 29° 54' 36.653" N
Long: 88° 52' 15.808" W

Leading Edge
Lat: 29° 52' 3.742" N
Long: 88° 15' 5.855" W

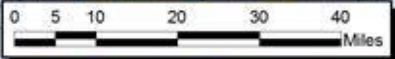
Leading Edge
Lat: 29° 22' 32.522" N
Long: 87° 12' 1.307" W

Incident Site - MC 252 Well Incident
Latitude: 28° 44' 17.3" N
Longitude: 88° 21' 57.4" W

- MTS Availability**
- Port Available
 - Port Partially Available
 - Port Not available
 - ▬ Fairway Available
 - ▬ Fairway Partially Available
 - ▬ Fairway Not available

WEATHER:
Wind: 12 knots from SSE
Seas: 3 ft

Slick depicted from SLAR data
on 5/3/2010 at 1200 Hrs



Bays and Beaches Operations



- ▶ Skimmers
- ▶ Boom & Barrier Establishment
- ▶ Shoreline Cleanup Assessment Teams
- ▶ Clean-up Personnel
- ▶ Wildlife Recovery Personnel



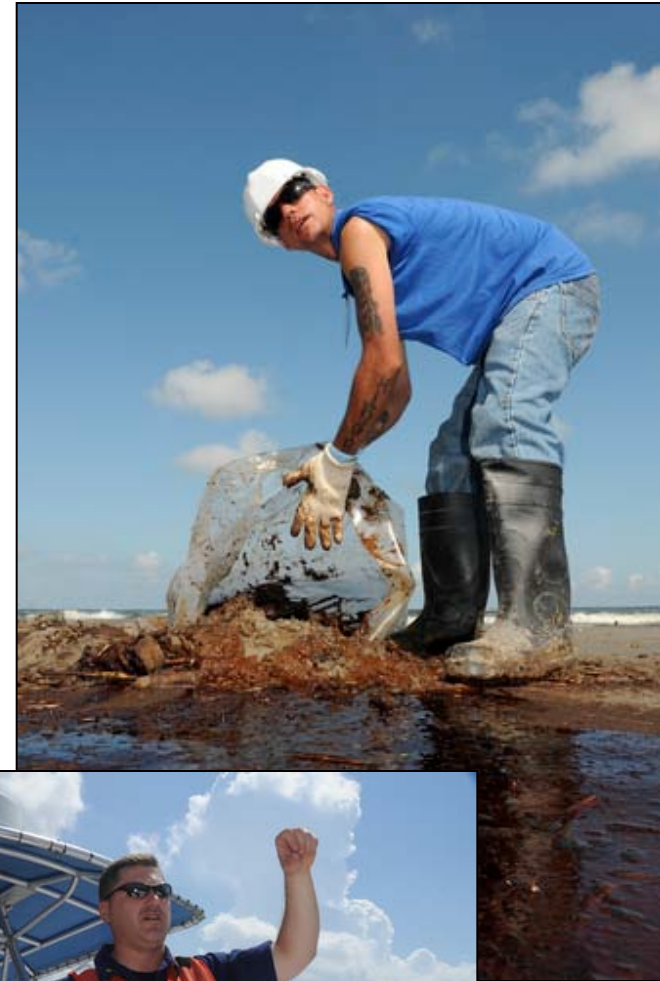
Critical Resources

More than 47, 000 responders

- ▶ 3, 300 Coast Guard
- ▶ 1,625 National Guard
- ▶ 41, 470 Contractors
- ▶ 723 BP
- ▶ 4, 000 Volunteers

Equipment Resources

- ▶ 12.6 million ft of boom deployed
- ▶ 835 skimmers
- ▶ 6, 131 vessels
- ▶ 60 cutters deployed to scene
- ▶ 123 aircraft
 - 78 rotary wing
 - 22 CG aircraft



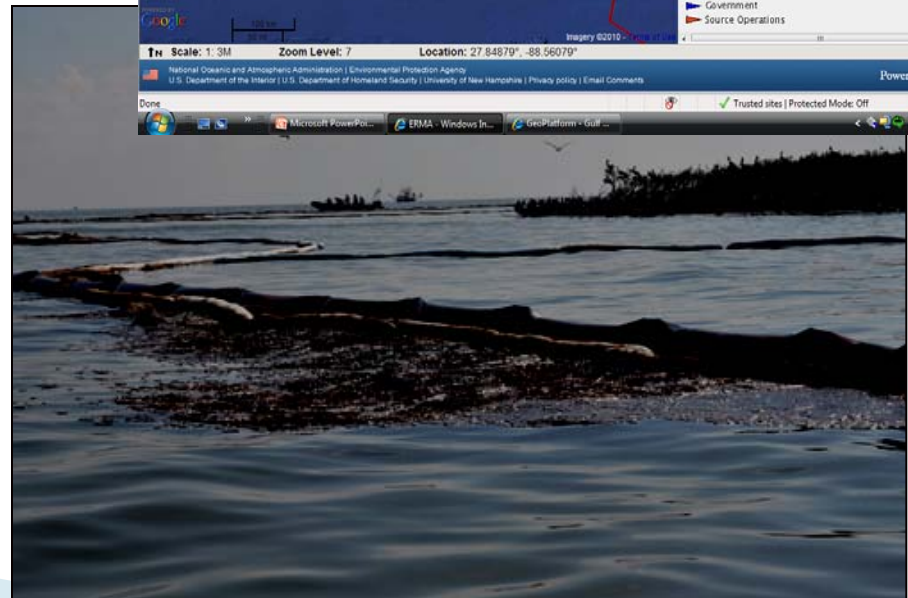
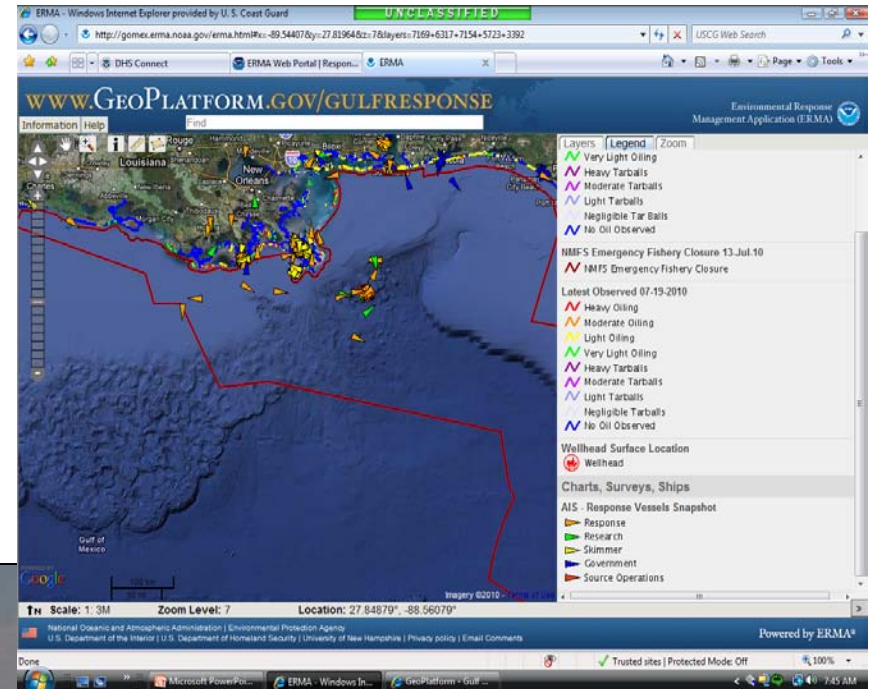
Fate of Oil

- ▶ 4.4 – 5.4 million barrels oil discharged (estimated)
- ▶ 800, 000 barrels oily water recovered
- ▶ More than 400 in-situ burns conducted
- ▶ 265, 000+ barrels mitigated through burns
- ▶ 1.07 million gallons of dispersants applied
 - Surface
 - Subsurface



Sheer Scope and Complexity of the Spill

- ▶ 5 States Effected
- ▶ Oil Containment Boom/Skimmers
 - 3.1 million ft
 - 835 skimmers
 - How much is enough?
- ▶ 45 Miles Offshore
- ▶ Area of the spill
- ▶ Depth: 5000 FT
- ▶ Overlapping Issues
 - Oil containment and recovery
 - Hurricane Season
 - Wildlife
 - Fishery Management
 - Tourism
- ▶ Subsea Oil Monitoring Plan



Moving Forward

- ▶ Transition to Long-Term Recovery and Natural Resources Damage Assessments and Public Health programs...continue to work to restore the Gulf Region to pre-spill conditions.
- ▶ Capture Lessons Learned and Identify potential Areas for improvement and implement recommendations to more effectively respond to future spills.
- ▶ Review the National Contingency Plan and National Response Framework to identify National-level issues to enhance public's expectation for a coordinated, "whole of government" response to Incidents of National Significance

Questions?

