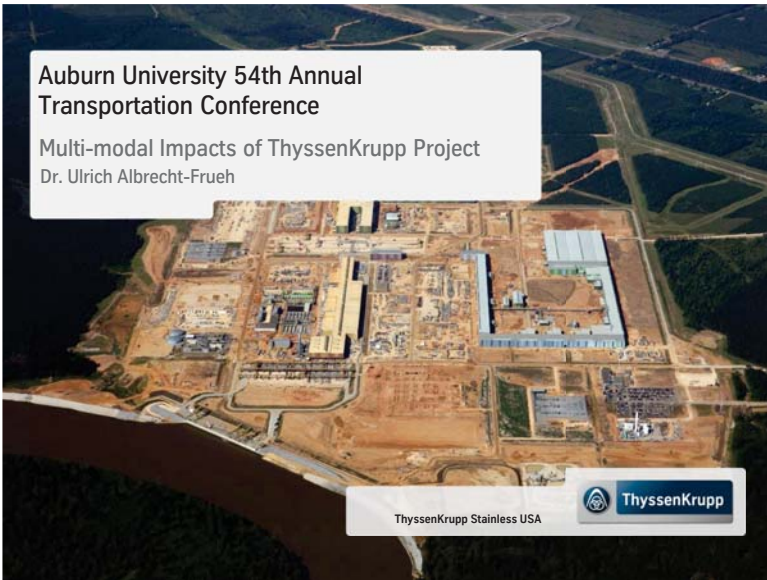
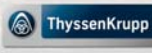


Auburn University 54th Annual Transportation Conference

Multi-modal Impacts of ThyssenKrupp Project
Dr. Ulrich Albrecht-Fruhe



ThyssenKrupp Stainless USA



ThyssenKrupp – Inventor and first Producer of Stainless Steel worldwide



54th Annual Transportation Conference
February 22, 2011
Multi-modal Impacts of ThyssenKrupp, Dr. Uli Albrecht-Fruhe
4

ThyssenKrupp Stainless USA



Multi-modal Impacts of ThyssenKrupp Agenda

- Why are we here in Calvert, Alabama?
- What was the impact so far?
- What will the mid term impact be?

54th Annual Transportation Conference
February 22, 2011
Multi-modal Impacts of ThyssenKrupp, Dr. Uli Albrecht-Fruhe
2

ThyssenKrupp Stainless USA



Stainless Steel Applications in Building and Architecture TK Stainless Steel will be used to build the Freedom Tower in New York

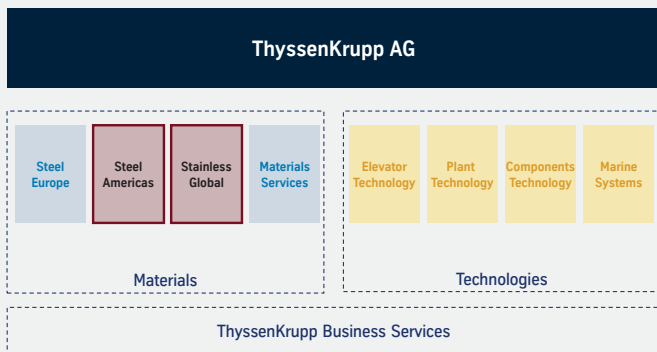


54th Annual Transportation Conference
February 22, 2011
Multi-modal Impacts of ThyssenKrupp, Dr. Uli Albrecht-Fruhe
5

ThyssenKrupp Stainless USA



ThyssenKrupp Organization

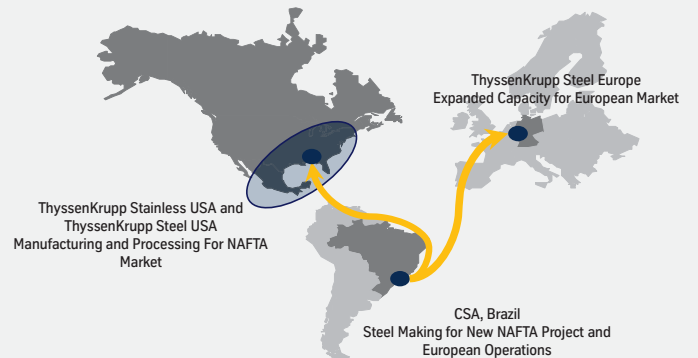


54th Annual Transportation Conference
February 22, 2011
Multi-modal Impacts of ThyssenKrupp, Dr. Uli Albrecht-Fruhe
3

ThyssenKrupp Stainless USA



ThyssenKrupp Materials Long-Term Global Strategy Three Core Projects To Strengthen Presence in High-Value Markets

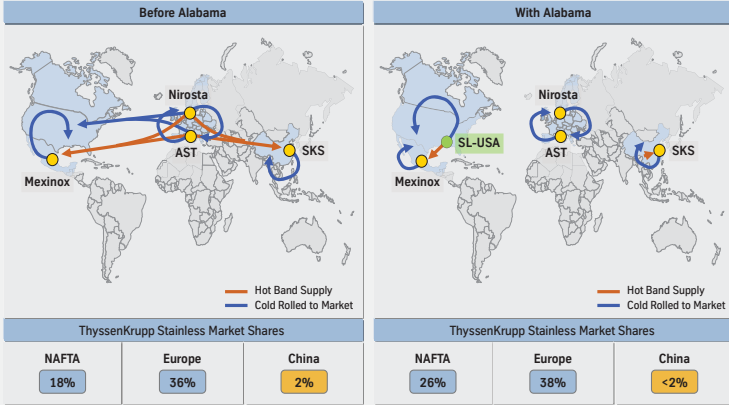


54th Annual Transportation Conference
February 22, 2011
Multi-modal Impacts of ThyssenKrupp, Dr. Uli Albrecht-Fruhe
6

ThyssenKrupp Stainless USA



ThyssenKrupp Stainless Global Investment Strategy Focus on the Core Markets in Europe and NAFTA



54th Annual Transportation Conference
February 22, 2011
Multi-modal Impacts of ThyssenKrupp, Dr. Uli Albrecht-Frueth

ThyssenKrupp Stainless USA



Progress of Construction

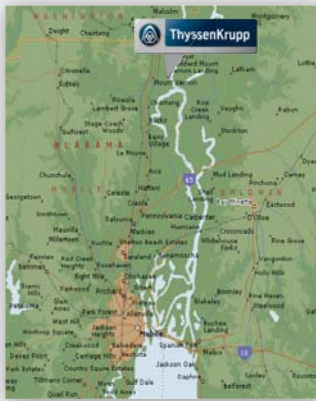


54th Annual Transportation Conference
February 22, 2011
Multi-modal Impacts of ThyssenKrupp, Dr. Uli Albrecht-Frueth

ThyssenKrupp Stainless USA



Why Calvert, Alabama?



- Main Rationale
 - Proximity to Supply Chain from Brazil
 - Proximity to Customers
- **Access to River, Rail, and Highway Transportation**
 - Access to Workforce
 - Competitive Operating Costs, Including Energy
 - Strength of Public Sector Partnerships
- Site Selection
 - Selected from 67 sites in 20 U.S. states
 - 30 Miles North of Mobile, AL on the Tombigbee River
 - Electricity Provided from Two Neighboring Generating Plants
 - 3,700 Acre Site Ready for Construction
 - Operate 24 Hours Per Day, 365 Days Per Year

54th Annual Transportation Conference
February 22, 2011
Multi-modal Impacts of ThyssenKrupp, Dr. Uli Albrecht-Frueth

ThyssenKrupp Stainless USA



Multi-modal Impacts of ThyssenKrupp Agenda

- Why are we here in Calvert, Alabama?
- What was the impact so far?
- What will the mid term impact be?



54th Annual Transportation Conference
February 22, 2011
Multi-modal Impacts of ThyssenKrupp, Dr. Uli Albrecht-Frueth

ThyssenKrupp Stainless USA



Progress of Construction

May 2007



January 2011



54th Annual Transportation Conference
February 22, 2011
Multi-modal Impacts of ThyssenKrupp, Dr. Uli Albrecht-Frueth

ThyssenKrupp Stainless USA



Combined Project in Numbers



- \$5 billion investment
- 3,700 acres (5.6 square miles), 1,400 acre footprint
- 11 million cubic yards of earth moved – twice as much as moved during construction of the Hoover Dam
- 75,000 pilings – laid end to end would stretch from Mobile to Houston, TX
- 1,000,000 cubic yards of concrete – enough to fill 385 Olympic sized pools
- Nearly 100,000 tons of steel erected – equivalent to 10 Eiffel Towers
- 24 miles of roads
- Over 6,000 construction workers onsite daily during peak times

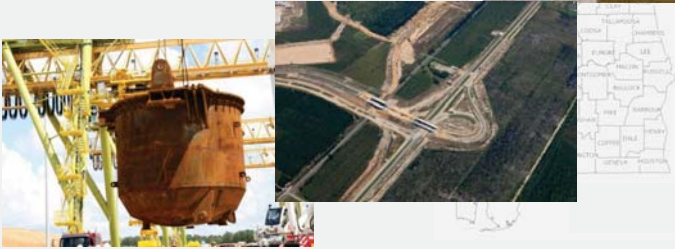
54th Annual Transportation Conference
February 22, 2011
Multi-modal Impacts of ThyssenKrupp, Dr. Uli Albrecht-Frueth

ThyssenKrupp Stainless USA



Importance of Highway Transportation Delivery of Construction Material and Equipment

- Majority of construction materials delivered via truck
- Majority of processing equipment crates delivered via truck
- Total of 6,000-10,000 truck loads received per month



Multi-modal Impacts of ThyssenKrupp Agenda

- Why are we here in Calvert, Alabama?
- What was the impact so far?
- What will the mid term impact be?

ThyssenKrupp Project Status

- 1800/2700 Team Members, ramping up in 2010-2011
- Total Hot Strip Mill rolling capacity of 5.3 million tons p.a.
 - 4.3 million tons Carbon Steel
 - 1 million Stainless Steel
- Cold Rolling Works started in October 2010; further start-up in 2011
- Melt Shop startup scheduled for end of 2012



Volume Driver Barge Transportation Estimated number of barges in/out: >4,800 p.a.



Combined Economic Impact to Date

- Direct Investments:**
 - Approximately \$200 million to date with Mobile area companies
 - Approximately \$1 billion to date with Alabama based companies
 - Approximately \$1.1 billion to date with other southeastern U.S. based companies
- Tax Revenue:**
 - \$25 million in Alabama corporate income tax
 - \$7 million to Mobile County Public Schools
 - \$2 million in tax revenues to the City of Mobile
 - \$1.5 million in tax revenues to Mobile County
- Additional Indirect Impacts:** Over \$626 million in spending by companies doing business with the project, their employees and taxes paid



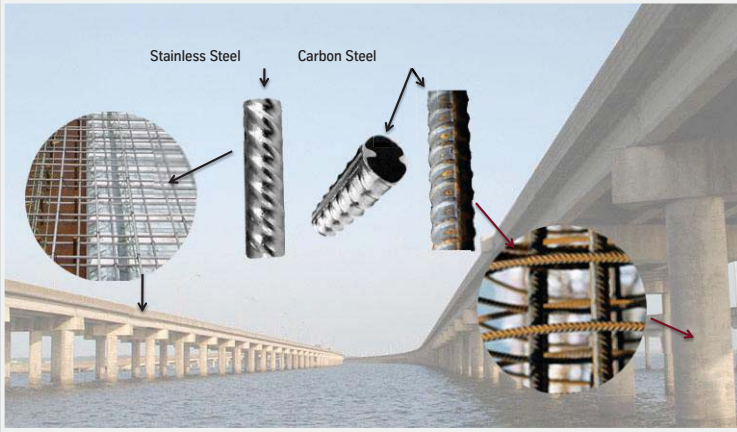
Alabama's Transportation Network Crucial Success Factor to ThyssenKrupp

- 2007 study concluded that
 - 23% of Alabama's major roads are in poor or mediocre condition.
 - 27% of Alabama's bridges are structurally deficient or functionally obsolete.

In 2009 the "Corrosion Prevention Act of 2009" was introduced in Congress to support corrosion prevention and central measures above and beyond federal, state, or local requirements



Data taken from U.S. Census Bureau, the U.S. Department of Transportation, the Federal Highway Administration



Questions and Answers



TK's Contribution to Improving Alabama's Transportation Network



- Viable solution for Alabama's bridges:
 - Stainless Steel rebar
 - Stainless Steel clad rebar with a carbon steel core
- Attracting downstream businesses, producers of stainless clad rebar to local area due to short supply chain



TK's Contribution to Improving Alabama's Transportation Network Comparison of Rebar Properties

Type of rebar	Stiffness (GPa)	Corrosion Resistance (kg/m ³)	Life Cycle (years)
Solid Stainless rebar	190	9.0	>100
Stainless clad carbon core rebar	205	9.0	~100
Galvanized rebar	210	N/A	<30
Black rebar	210	0.7	<25

